

# 6500RR

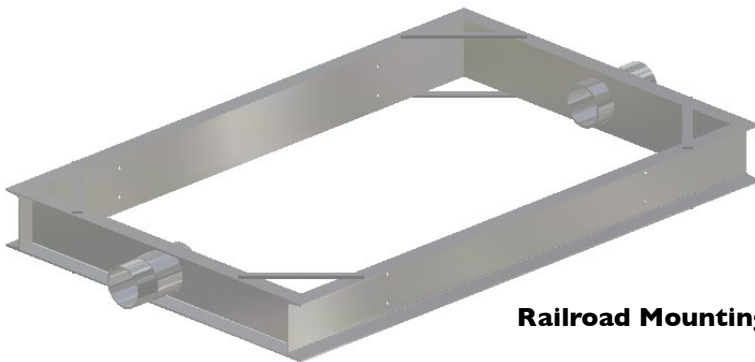
Railroad Opacity Meter



The 6500RR opacity meter provides a simple and easy means of detecting and measuring the opacity of smoke being emitted by a diesel locomotive engine. Our standard system comes complete with a unique mounting frame, heavy duty optics to withstand high temperatures, and shielded cables to guard against any possible damage to wiring.

Model 6500RR Opacity Meter Complete includes:  
(part number 194-6500B-RR)

- Control Unit
- Light Unit
- Receiving Unit
- Up to 150' Heavy Duty Shielded Cable
- Verification Filter Assembly
- Power Supply Transformer
- 0-1 Volt Retransmission output for use with a chart recorder or data acquisition system.
- 100 samples per second.
- Has a rise time of .5 seconds
- Has a light source collimated to a diameter of 1.125 inches for accuracy while spanning longer distances



**Railroad Mounting Frame**



**WAGER**  
C O M P A N Y