

# 7500RR

Smoke Meter



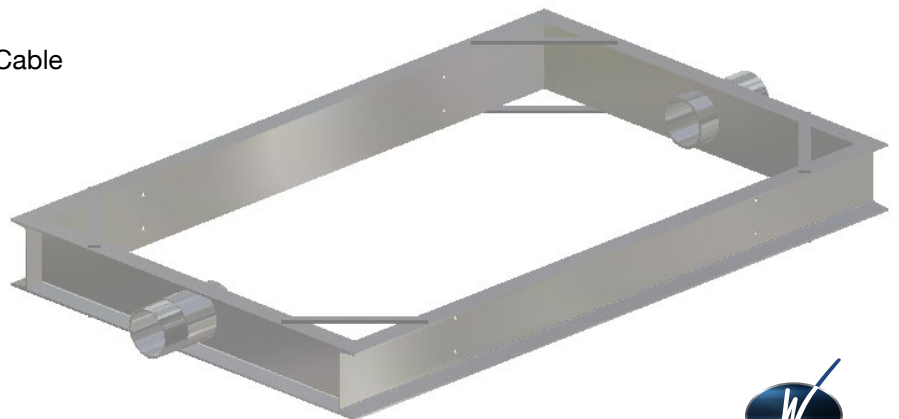
The 7500RR meter is a PC based system used for detecting and measuring opacity in diesel emissions. This is our most technologically advanced meter, using customized software to fit any application.

Our standard system comes complete with a unique mounting frame, heavy duty optics to withstand high temperatures, and shielded heavy duty cabling to prevent against possible damage to wiring. This system also has log files for maintaining vehicle information, and a data collection file that can be easily saved and retrieved after testing.

- Software may be customized to fit a specific application
- Sampling rate of 100 samples per second
- Light source is collimated to a diameter of 1.125 inches
- Customers may use their own laptops or PC's providing they meet necessary requirements

Model 7500RR Smoke Meter Complete Includes:  
(Part No. 7500C-RR)

- Control Unit
- Light Unit
- Receiving Unit
- Up to 150' Heavy Duty Shielded Cable
- Verification Filter Assembly
- Power Supply Transformer
- Laptop Assembly
- PC interface cable
- Software interface



Railroad Mounting Frame

