

# 1500-1

## VERTICAL VENT CHECK VALVE

Wager's model 1500-1 vent check valve is mounted vertically on the deck of a ship. In the open position, the valve allows for required ventilation. During heavy seas, our disc style float rises to a buna seat, and prevents water and debris from entering tanks and bulkheads.

A 30 x 30 mesh stainless steel screen provides protection from deck fires. It is available in galvanized steel, and stainless steel.

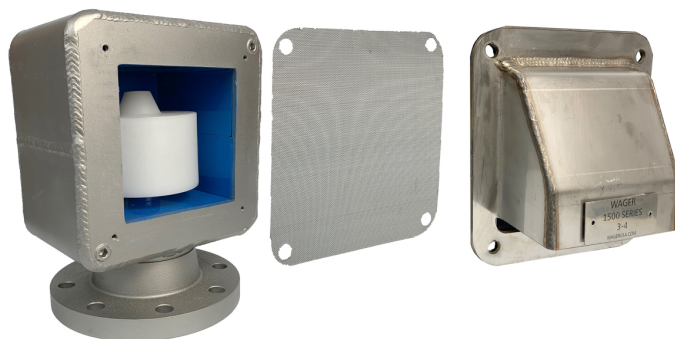
Special request are needed for aluminum and bronze. Sizes 1.5"-12" threaded, welded, flanged and metric flange.



THE 1500-1 IS ABS TYPE APPROVED



MADE IN THE USA



## SPECIFICATIONS

### GALVANIZED STEEL

#### CONNECTIONS:

- THREADED (1.5" - 6" ONLY)
- BUTTWELD (1.5" - 6" ONLY)
- FLANGED ( METRIC AVAILABLE)
- VICTAULIC GROOVE COUPLING

#### SIZES:

- 1.5", 2", 2.5", 3", 4", 5", 6", 8", 10", 12", 14", 16"

### 304 STAINLESS STEEL

#### CONNECTIONS:

- THREADED (1.5" - 6" ONLY)
- BUTTWELD (1.5" - 6" ONLY)
- FLANGED ( METRIC AVAILABLE)
- VICTAULIC GROOVE COUPLING

#### SIZES:

- 1.5", 2", 2.5", 3", 4", 5", 6", 8", 10", 12", 14", 16"

### 316 STAINLESS STEEL

#### CONNECTIONS:

- THREADED (1.5" - 6" ONLY)
- BUTTWELD (1.5" - 6" ONLY)
- FLANGED ( METRIC AVAILABLE)
- VICTAULIC GROOVE COUPLING

#### SIZES:

- 1.5", 2", 2.5", 3", 4", 5", 6", 8", 10", 12", 14", 16"

### ANODIZED ALUMINUM

#### CONNECTIONS:

- THREADED (1.5" - 6" ONLY)
- BUTTWELD (1.5" - 6" ONLY)
- FLANGED ( METRIC AVAILABLE)
- VICTAULIC GROOVE COUPLING

#### SIZES:

- 1.5", 2", 2.5", 3", 4", 5", 6", 8", 10", 12", 14"