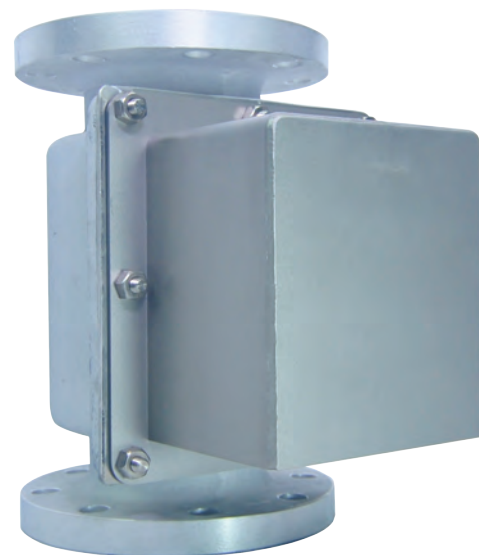


# 1500-MV

## MUD VENT VALVE

The 1500-MV Mud Valve is designed for tanks that carry liquid mud. Inside the mud chamber is a ball check that prevents the liquid mud from rising into the upper vertical vent check valve. The liquid mud is instead forced through a spring loaded door (instead of a burst disc) on the front of the valve. After the mud flow resides, the ball float returns to it's original position allowing airflow to return through the upper chamber. The 1500-MV is designed for ease of maintenance. To clean, simply remove the front cover assembly, clean, and replace.



Wager's Model 1500 Vertical Vent Check Valve works in collaboration with the 1500-MV Mud Valve. Simply connect the two valves together at the flange.



## SPECIFICATIONS

### GALVANIZED STEEL

#### CONNECTIONS:

- THREADED
- BUTTWELD
- FLANGED ( METRIC AVAILABLE)
- VICTAULIC FLANGE

#### SIZES:

- 4", 5", 6", 8", 10"

### 316 STAINLESS STEEL

#### CONNECTIONS:

- THREADED
- BUTTWELD
- FLANGED ( METRIC AVAILABLE)
- VICTAULIC FLANGE

#### SIZES:

- 4", 5", 6", 8", 10"

### ANODIZED ALUMINUM (UPON REQUEST)

#### CONNECTIONS:

- THREADED
- BUTTWELD
- FLANGED ( METRIC AVAILABLE)
- VICTAULIC FLANGE

#### SIZES:

- 4", 5", 6", 8", 10"