

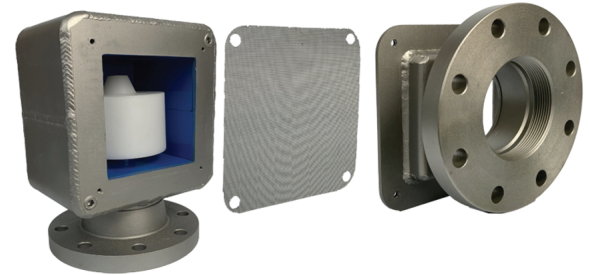
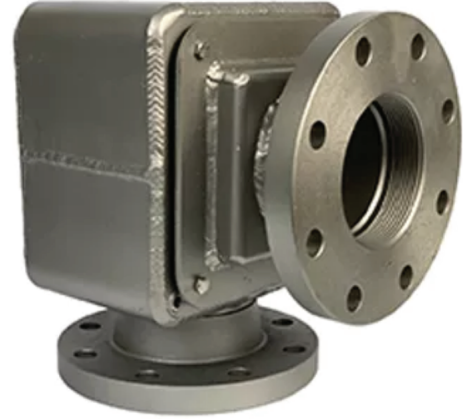
1500-1

WITH 90 DEGREE COVER
VERTICAL VENT CHECK VALVE

The 1500 Series-1 has a 90 degree cover and is designed for installations where a 90 degree mount is necessary. The flanged outlet mounts with a 90 degree turn instead of our standard vertical mount.

The 1500-1 allows for ventilation in the open position, and a disc style float will rise in the event of heavy seas and prevent sea water and debris from entering into tanks and bulkheads.

The 1500-1 is available in all sizes, however 12", 14", 16" are only available with 1/4 x 1/4 mesh screen.



THE 1500-1 IS ABS TYPE APPROVED



MADE IN THE USA

SPECIFICATIONS

GALVANIZED STEEL

CONNECTIONS:

- THREADED (1.5" - 6" ONLY)
- BUTTWELD (1.5" - 6" ONLY)
- FLANGED (METRIC AVAILABLE)
- VICTAULIC GROOVE COUPLING

SIZES:

- 1.5", 2", 2.5", 3", 4", 5", 6", 8", 10", 12", 14", 16"

304 STAINLESS STEEL

CONNECTIONS:

- THREADED (1.5" - 6" ONLY)
- BUTTWELD (1.5" - 6" ONLY)
- FLANGED (METRIC AVAILABLE)
- VICTAULIC GROOVE COUPLING

SIZES:

- 1.5", 2", 2.5", 3", 4", 5", 6", 8", 10", 12", 14", 16"

316 STAINLESS STEEL

CONNECTIONS:

- THREADED (1.5" - 6" ONLY)
- BUTTWELD (1.5" - 6" ONLY)
- FLANGED (METRIC AVAILABLE)
- VICTAULIC GROOVE COUPLING

SIZES:

- 1.5", 2", 2.5", 3", 4", 5", 6", 8", 10", 12", 14", 16"

ANODIZED ALUMINUM

CONNECTIONS:

- THREADED (1.5" - 6" ONLY)
- BUTTWELD (1.5" - 6" ONLY)
- FLANGED (METRIC AVAILABLE)
- VICTAULIC GROOVE COUPLING

SIZES:

- 1.5", 2", 2.5", 3", 4", 5", 6", 8", 10", 12", 14"